

AXIUS

Quick Acting Valve DN 15, PN 250

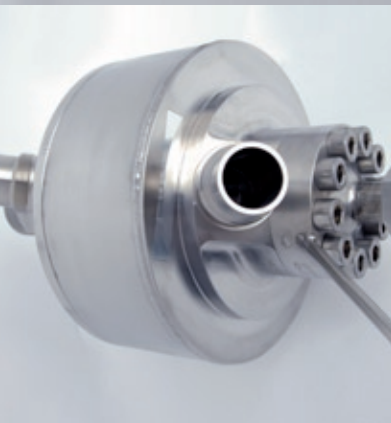
The Cryo Quick Acting Valve

The AXIUS cryo quick acting valve is designed for extreme requirements. It is suitable for LH2 and LO2 and is characterised by compact bodywork and low weight. With a nominal diameter of 15 mm and an operating pressure of 250 bar it matches consistently with the standard model range.

The instant, precise and quick acting of 10 ms only is guaranteed by a pre-cooling unit within the valve. The heat loss performance is minimised by the optimised bodywork of AXIUS.

The valve is designed as an „opener“, but can be supplied as a „closer“ as well. In „emergency operation“ the valve falls into closed position. The valve position is optically indicated by a pin. For MSR it is additionally equipped with an analogue position sensor. The quick acting valve is welded into the pipework. The control stubs can be screwed, too. The central sealing can be easily maintained.

The AXIUS cryo quick acting valve is also available as 3/2-way valve and with customer-specific end connections.



Technical data	Standard model	Modification
Type:	AXIUS quick acting	
Operating temperature:	77 K bis 323 K (-196°C bis +50°C)	further upon request
Operating pressure:	250 bar	further upon request
Actuating pressure:	40 bar	
Service fluids	LO ₂ , LH ₂ , LCH ₄	further upon request
Body materia:	stainless steel	further upon request
Actuator:	pneumatic	metallic seal, plastic seal
Acting time:	10 ms	
Installation position:		any
Nominal diameter:	15 mm	further upon request